

# Bridge & IET Showcase Webinar

February 23, 2021



# Welcome & Introductions

Lori Meyer

Associate Director, Education & Technical Assistance  
Manhattan Strategy Group

# Advancing Innovation in Adult Education



- 5-year effort to identify and highlight practices in adult education that lead to improved learner outcomes
- Funded by U.S. Department of Education, Office of Career, Technical, and Adult Education
- Led by Manhattan Strategy Group in partnership with Abt Associates

# How to Take Part in This Webinar



Click the “Chat” button to ask questions at any point.

**Content Questions:** To submit a content question, select “All Panelists” from the dropdown menu in the Chat panel, enter your question in the message box provided and send.

**Technical Questions:** If you require technical assistance, please send a chat to the host.

This presentation is being recorded and will be available after the webinar.

A screenshot of a chat panel window titled 'Chat' with a close button (X) in the top right corner. Below the title bar, there is a 'To:' label followed by a dropdown menu showing 'All Panelists'. Below the dropdown is a text input field with a vertical cursor.A screenshot of a chat panel window titled 'Chat' with a close button (X) in the top right corner. Below the title bar, there is a 'To:' label followed by a dropdown menu showing 'Host'. Below the dropdown is a text input field with the placeholder text 'Enter chat message here'.

# Like & Follow on Social Media



Hashtag

**#AdultEduINNOVATOR**



Twitter Live Posts

**@mstrategy**



Like Advancing Innovation on Facebook

**@AdvancingInnovationinAdultEd**



Follow Advancing Innovation on LinkedIn

**@AdvancingInnovationinAdultEd**

**Sharon Lee Miller**

Director

Division of Academic and  
Technical Education

U.S. Department of  
Education



**Office of Career, Technical, and Adult  
Education**

U.S. Department of Education

Cheryl Keenan

Director

Division of Adult  
Education and Literacy

U.S. Department of  
Education



Office of Career, Technical, and Adult  
Education

U.S. Department of Education

# Adult Education Bridge & IET Programs



**Nadine Holthaus**

Bridges to Careers Expansion  
Rochester Adult Literacy at  
Hawthorne  
Rochester, MN



**Drew Gamet**

Career Pathways  
South Bay Adult School  
Redondo Beach, CA



**Tammie Hickey**

Connections 101  
Great Falls Career and College  
Readiness Center  
Great Falls, MT



**Jan Suding**

Certified Clinical Medical Assistant  
Jennings County Education Center  
North Vernon, IN



**Rachel Ambrose**

PluggedIn Virginia (PIVA) Boot Camp  
Peninsula Regional Education Program  
Newport News, VA



# Context for Bridge & IET Programs



## Bridge Programs

Adult education bridge programs prepare adults to enroll in postsecondary education and training through occupationally contextualized literacy and numeracy instruction and career and college success activities.

## IET Programs

IET programs enable adult learners to develop their foundational skills and workforce preparation skills through occupational training that leads to educational and career advancement.

# Bridges to Careers Expansion



## **Bridges to Careers Expansion** **Rochester Adult Literacy at Hawthorne** **Rochester, MN**

*Innovator in Bridge Programs*

### **THE PRACTICE**

The Bridges to Careers Expansion grows existing partnerships to enable a more diverse range of learners to meet their career goals in healthcare pathways.

### **INNOVATIVE FEATURES**

- Incorporated new career pathways in healthcare beyond direct-service healthcare pathways.
- Enrolled learners earn short-term, employer-recognized certificates.
- Learners can receive up to seven articulated credits upon enrollment at Rochester Community and Technical College.
- Monthly partnership meetings to coordinate services for learners.
- Employer partners recognize program completion certificates and have agreed to interview and consider hiring completers.



# Career Pathways



## Career Pathways

**South Bay Adult School (SBAS)**  
**Redondo Beach, CA**

*Innovator in IET Programs*

### THE PRACTICE

The Career Pathways program provides adult learners with a broad range of academic and advising supports while earning industry-recognized credentials in a career pathway.

### INNOVATIVE FEATURES

- Academic bridge course incorporates efficiency into the pathway from basic skills to college certificate and industry credentials.
- Courses are co-taught by an SBAS ESL or basic skills instructor and an El Camino College instructor.
- Program funds weekly instructor meetings to discuss learners' progress, coordinate efforts, and plan lessons.
- Learners' progress is bolstered by intensive support services from an SBAS transitions manager and El Camino College counselor.



**South Bay  
Adult School**

**INNOVATOR IN  
IET PROGRAMS**



# Certified Clinical Medical Assistant



## Certified Clinical Medical Assistant (CCMA)

Jennings County Education Center (JCEC)  
North Vernon, IN

*Innovator in IET Programs*

### THE PRACTICE

Adults living in a rural area can access a nationally recognized credential in the healthcare field while developing their reading and math skills.

### INNOVATIVE FEATURES

- The program is delivered in a rural area and eliminates transportation barriers by bringing qualified instructors to the learners.
- The CCMA credential enables learners to obtain a job that is above entry level.
- JCEC offers training providers free physical space to deliver the CCMA courses.



# Connections 101



## Connections 101

### Great Falls Career and College Readiness Center (CCRC) Great Falls, MT

*Innovator in Bridge Programs*

#### THE PRACTICE

Adult education, higher education, and workforce stakeholders collaborate to help adult learners gain the skills and strategies they need to be successful in college or the workforce.

#### INNOVATIVE FEATURES

- A strong partnership between CCRC, Great Falls College Montana State University (GFCMSU), and the Montana Department of Labor and Industry enables CCRC to braid funds to provide a no-cost program for underserved populations.
- Learners can earn up to six prior learning assessment (PLA) credits at GFCMSU upon completion of the program.
- Learners who transition to GFCMSU from CCRC receive 50% off the first six PLA credits that they transfer to the college.



**Great Falls Career  
and College  
Readiness Center**

**INNOVATOR  
IN BRIDGE  
PROGRAMS**



# PluggedIn Virginia (PIVA) Boot Camp



## PluggedIn Virginia (PIVA) Boot Camp

Peninsula Regional Education Program

Newport News, VA

*Innovator in Bridge Programs*

### THE PRACTICE

The PIVA Boot Camp enhances the PluggedIn Virginia model by providing a bridge for learners through contextualized academic instruction and workforce preparation activities in preparation for occupational training.

### INNOVATIVE FEATURES

- Expands access to learners that are not eligible for job training programs by delivering instruction in academic, workplace readiness, and occupational skills.
- Offers a flexible model that can be used in a range of industries and with a range of occupational training partners, such as community colleges and state and local government agencies.
- The Boot Camp incorporates career exploration to ensure learners are a good match with their selected occupational training.



**Peninsula  
Regional Education  
Program**  
**INNOVATOR  
IN BRIDGE  
PROGRAMS**

# Panel Discussion

Cheryl Keenan & Sharon Lee Miller

# Closing Remarks

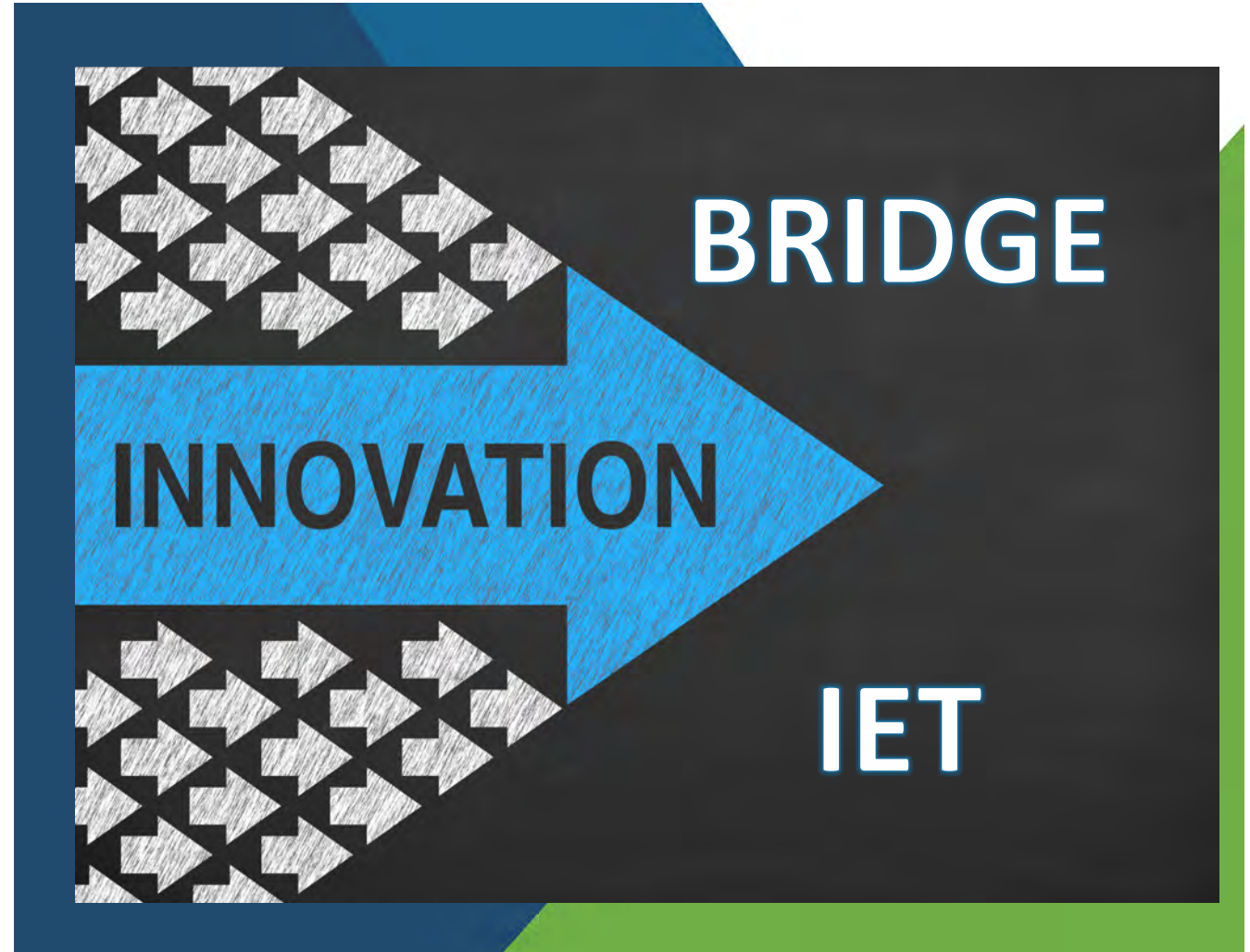
Lori Meyer



## Learn more

- Gallery of Practices
- Compendium of Innovative Practices
- Apply

[lincs.ed.gov/state-resources/federal-initiatives/advancing-innovation](https://lincs.ed.gov/state-resources/federal-initiatives/advancing-innovation)



# Thank you for participating in today's webinar!

- **Share your feedback:**  
complete survey
- **Contact us:**  
[innovation@lincs.ed.gov](mailto:innovation@lincs.ed.gov)

